

# Why would I want to work in Tuolumne County for Environmental Health?

## 1. Competitive compensation

Tuolumne county's salary schedule is highly **competitive** with neighboring foothill counties, not all of which provide for Social Security benefits as Tuolumne does. In addition, Tuolumne County is offering a substantial one-time bonus when you are hired.



**Tip!** When comparing salaries between different counties, check to make sure that the comparison takes payment into social security and cost of living into consideration. Here is an example:

An entry level Environmental Health Trainee in Marin County pays \$71,155 while the same position in Tuolumne County pays \$55,349, the cost of living in San Rafael is 46.5% higher than in Sonoma and the salary at Tuolumne would be equivalent to a salary of \$73,845 in Marin County. (Source: <https://www.salary.com/research/cost-of-living/compare/san-rafael-ca/sonoma-ca>)

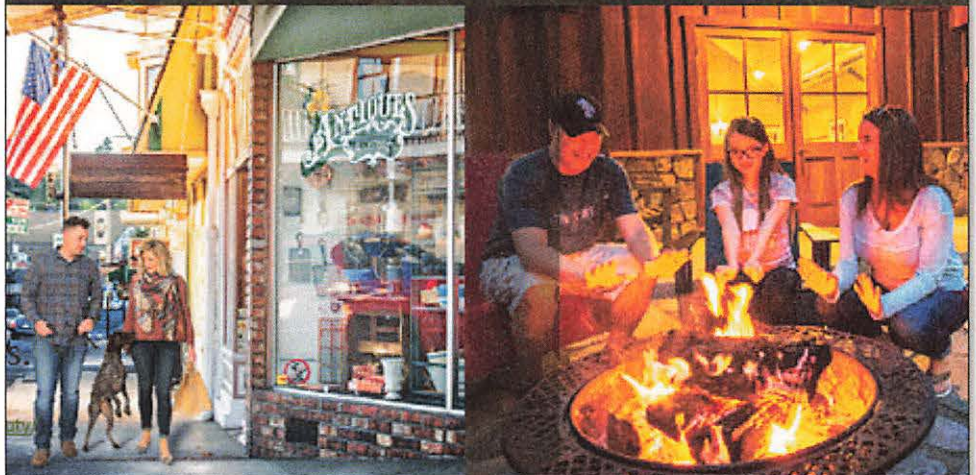
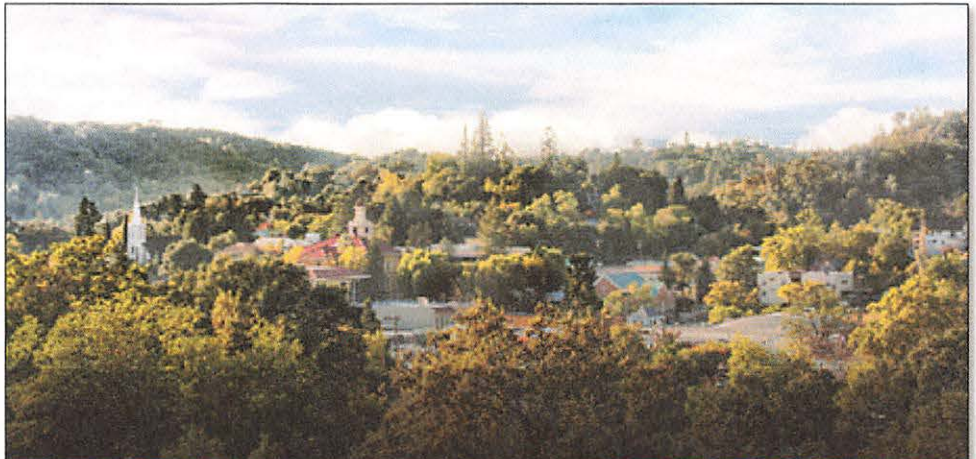
## 2. Quality of life

You will discover a laid-back rural lifestyle in Tuolumne County. No traffic jams, plenty of space for everyone, and a spontaneous open and friendly atmosphere that cannot be found in a rushed and crowded urban environment.

You will be surrounded by physical beauty unmatched anywhere in the state. A recent USDA study ranked all 3,111 counties in the contiguous United States for scenic beauty and climate. **Tuolumne County ranked 34th nationwide!**

Whatever your age or your favorite recreational activity, you will need to look no farther than just out your back door in Tuolumne County.

The area enjoys a mild, four-season climate. During the winter, you can ski, snowboard, snowmobile or ice skate in the adjacent highlands and then, during the summer, shift your focus to boating and fishing on either the numerous lakes and reservoirs or smaller high-country lakes which can be reached by hiking into the Emigrant Wilderness. Or relax with friends and go wine tasting at one of our many world-class wineries and take in an art gallery or two. Boating, fishing, hunting, golf, water sports, hiking, photographing the surrounding beauty: the opportunities are almost endless!



fishing, hunting, golf, water sports, hiking, photographing the surrounding beauty: the opportunities are almost endless!

### 3. Supportive Management and Staff

We in Environmental Health often describe ourselves as “**family**.” Although small in number (6) we perform all major Environmental Health Programs in a user-friendly manner that has earned us the respect and appreciation of our community. Staff specialize in certain programs but are also “generalists” who handle a variety of programs and provide cross-coverage between individuals as needed to assure program continuity.

*“I love my work. And I also love the natural beauty of Tuolumne County and all the wonderful recreational opportunities that are available outside of my front door.”*

- Nadine Martelli  
Senior Environmental Health Specialist

Environmental Health is an integral member of the Tuolumne County Community Development Department **team** that also includes the Planning, Building, Housing, Natural Resources, and Code Enforcement Divisions.

Staff within the Environmental Health Division have one or two areas of focus, such as in Consumer Protection, Solid Waste, Land Use, or Hazardous Materials and Wastes,

*“As a new EHS II, I enjoy gaining expertise in a variety of Environmental Health programs and appreciate the support of my EH family.”*

- Nang Yang  
Environmental Health Specialist II

but also support each other in their area of focus. This means that at Tuolumne County staff enjoy training in all Environmental Health Programs and therefore have a **maximum versatility** for lateral or upward mobility in the profession.



It is a pleasure for me to work with my staff in the Environmental Health Division. I am supporting their efforts to build strong, comprehensive programs by assuring that the Division has the staffing resources to perform their important work. -Quincy Yaley, CCD Director

With strong and supportive **leadership** by the Department’s Director, the EH Division has increased staff, streamlined workflows, prioritized program activities, and is in the process of becoming the leader in Central California for program development and implementation.



Please call the Environmental Health Director at (209) 533-5665 or send an email to [bbanner@co.tuolumne.ca.us](mailto:bbanner@co.tuolumne.ca.us) if you have any questions about the positions available or about life in Tuolumne County.